

## Playing Video / Audio

### Playing Video through TV Out

- 1) Connect the video cable to TV and device like the following picture. (yellow jack for Video Input, white and red for Audio L/R on the TV)
- 2) Select VIDEO Mode on Mode S/W
- 3) Push the "Operation Button", then power will turn on and blue LED start blinking to play video after green LED flicked out.
- 4) Video Playing starts from latest recorded video in reversed order.
- 5) If you push the "Operation Button" quickly 2 times within 1 second while playing the video, it stops playing current video, then start playing the file right before currently played file.
- 6) If you push the "Operation Button" a long while, it stops and power offs.



### Listening the recorded Voice using earphones

- 1) Connect the provided earphones to the device as above picture.
- 2) Select AUDIO Mode on Mode S/W.
- 3) Push the "Operation Button", then power will turn on and blue LED start blinking to play Voice after green LED flicked out.
- 4) Voice Playing starts from latest recorded voice in reversed order.
- 5) If you push the "Operation Button" quickly 2 times within 1 second while playing the audio (voice), it stops playing current voice, then start playing the file right before currently played file.
- 6) If you push the "Operation Button" a long while, it stops and power offs.

- 3) Remove the device from the USB port of the PC.
- 4) It will automatically restart and date and time will be changed according the time setup.

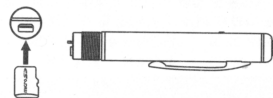
## Specification

Item	Specification	
Model #	<b>CAM-2</b>	
Max. Video Recording	4GB : 4 hours	8GB : 8 hours
Max. Voice Recording	4GB : 65 hours	8GB : 130 hours
Video Quality	MPEG4 640x480 / AAC 48kbps, mono	
Audio Quality	MP3 128kbps, mono	
Video Out	NTSC	
Dimension	13mm(D) x 140mm(H)	
Weight	36g	
Storage Media	Micro SD Card	
Battery	Built in Lithium-Polymer BAT, DC3.7V 160mAh	
External Power	DC 5V 0.8A	
Battery Life	Max. 1 hours for video recording Max. 1.5 hours for voice recording	
Operation Temp.	0 °C ~ 40 °C	

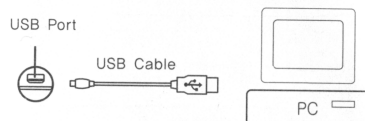
## Playing on PC

### Watching recorded Video on PC

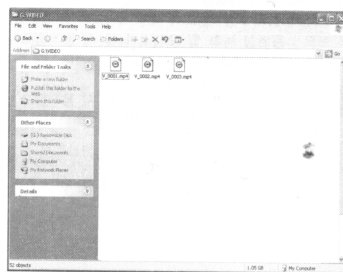
- 1) Insert the Micro SD Card into the device first.



- 2) Connect the device into the USB port of the PC using provided USB Cable.



- 3) Click the recored Video file from the folder in My Computer > Removable Disk > VIDEO



- 4) Playback the recorded video using any media player such as GOM Player, KMPlayer, or VLC Player (We recommend to use GOM Player for Windows users and VLC Player for Mac users)

- ※ If the video or audio does not playback, please download and install proper codecs from Internet so as to mach with your media player.
- ※ The Quick Photos are stored in My Computer > Removable Disk > CAPTURE



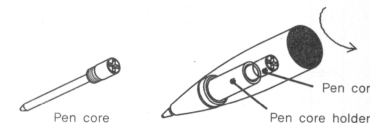
### Listening to the recorded voice from PC

- 1) Insert the Micro SD Card into the device first, then connect the device into the USB port of the PC using provided USB Cable. (refer to the "Watching recorded Video on PC" )
- 2) Click the recored Video file from the folder in My Computer > Removable Disk > VOICE
- 3) Playback the recorded voice using media player.

## Replacing Pen core

This device is to replace the pen core. Please replace the pen core as follows.

- 1) Separate the case, which have the pen core from the device.
- 2) The pen core is installed as the below picture. The pen core is to be separated if you turn the pen core toward counterclockwise using "+" type screw driver.



- 3) Install the new pen core into pen core holder to be fixed, then turn the pen core toward clockwise using "+" type screw driver to install it into pen core holder.

## Product Warranty

- ✦ We warrants this product against all defects in material and workmanship for a period of one year from the date of purchase by end user. The conditions for warranty are as follows:
- ✦ The warranty is valid only if the original receipt issued to the original purchaser by the dealer is presented with the product to be repaired or replaced.
- ✦ The warranty is void if the serial number, date of purchase and product label had been removed.
- ✦ The warranty does not cover any failure or damage of the product due to normal wear and tear, physical abuse, improper installation, misuse, modification or repairs by unauthorized third parties.
- ✦ We does not assume responsibility for any loss or damage incurred during shipment and as a result of force majeure.
- ✦ We is not liable for any incidental or consequential damages arising from the use or misuse of the product.
- ✦ All warranty claims are limited to repair or replacement of the defective product at the sole discretion of We.
- ✦ If Manufacturer repairs or replaces the product, the repaired or replaced product shall be warranted for the remaining time of the original warranty period. Repair or replacement may involve the use of functionally equivalent reconditioned units.
- ✦ Replaced part or product becomes the property of We.
- ✦ Consumable components, such as batteries, are not included in the warranty obligation.

### Disclaimer Notice

The manufacturer shall not be liable for errors contained herein or for incidental or consequential damages in connection with the furnishing, performance or use of this material. This document contains proprietary information, which is protected by international patent applications and copyright. All rights reserved. No part of this document may be copied, reproduced or translated without prior written consent of the manufacturer. The manufacturer reserves the right to revise this publication and to make changes from time

of such revisions or changes. The manufacturer also reserves the right to change the specifications without notice.

### European CE notice to users and product statements

This product is CE marked according to the provisions of the R & TTE Directive (99/5/EC). Hereby, We, declares that this product is in compliance with the essential requirements and other relevant provisions of Directive 1999/5/EC. For further information, please contact.

### FCC notice to users and product statements

THIS DEVICE COMPLIES WITH PART 15 OF THE FCC RULES. Operation is subject to the following two conditions: (1) this device may not cause harmful interference, and (2) this device must accept any interference received, including interference that may cause undesired operation.

CAUTION: Changes or modifications not expressly approved by the party responsible for compliance could void the user's authority to operate the equipment.

### WEEE Directive 2002/96/EC Art. 11(2)



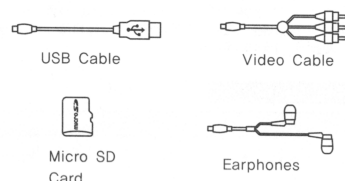
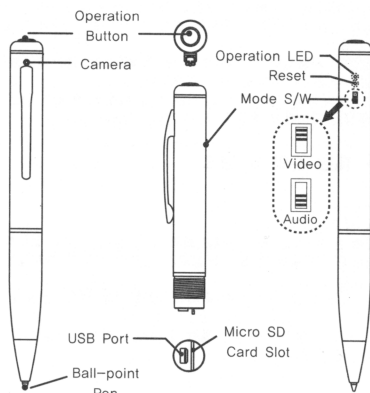
The use of the symbol indicates that this product may not be treated as household waste. By ensuring this product is disposed of correctly, you will help prevent potential negative consequences for the environment and human health, which could otherwise be caused by inappropriate waste handling of this product. For more detailed information about recycling of this product, please contact your local city office, your household waste disposal service or the shop where you purchased the product.

# CAM-2

Digital Camcorder/Camera  
Voice Recorder  
User's Manual



## Packing Contents



**Notice:** Please make sure to charge the battery before use.

## Operation Guide

### Video Recording

- 1) Select VIDEO Mode (V) on Mode S/W by pulling up.
- 2) Push the "Operation Button", then power will turn on and blue LED (red LED in low battery) will start blinking to record video after green LED flicked about 5 seconds.
- 3) To stop recording, push the "Operation Button" a long while, then it save the recored video and turn off the power.
- 4) If it records continuously more than 10 minutes, it automatically saves recorded file and start recording a new file.

### Taking a Quick Photo

- 1) Select VIDEO Mode (V) on Mode S/W by pulling up.
- 2) Push the "Operation Button", then green LED will turn on 3 seconds, after that the green LED blinks on 3 seconds.
- 3) Click the "Operation Button" while green LED blinks in 3 seconds, then blue LED (red LED in low battery) will start blinking to take Quick Photos.
- 4) Quick Photo takes 5 shots at one time, then power will turn off automatically.

### Voice Recording

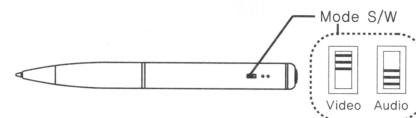
- 1) Select AUDIO Mode (A) on Mode S/W by pulling down.
- 2) Push the "Operation Button", then power will turn on and blue LED (red LED in low battery) start blinking to record voice after green LED flicked 2~3 seconds.
- 3) If you push the "Operation Button" a long while, it will stop and turn off the power Notice.

#### Notice

- ※ Please make sure that the Micro SD card was loaded correctly into the device before using Video Recording / Taking a Quick Photo / Voice Recording.
- ※ Please DO NOT remove the Micro SD card while operation. It may cause the damage and malfunction. We STRONGLY recommend to remove the Micro SD card after POWER-OFF.

## Changing Mode

- 1) You may select VIDEO and VOICE Mode from Mode S/W. (Changing Mode must be selected while POWER-OFF)
- 2) Each Mode operates like the following
  - VIDEO Mode: Recording / Playing Video
  - PICTURE Mode: Taking a Quick Photo while selecting on VIDEO from Mode S/W.
  - VOICE Mode: Recording / Playing Voice



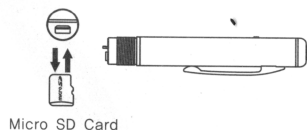
## LED Blinking

LED Blinking shows each operation of the device

- 1) Operation Status: LED color shows battery status
  - Recording Mode: While recording Video and Voice, blue LED blinks a time in every 1.5 seconds and red LED blinks in low battery.
  - Playing Mode: While playing Video and Audio, blue LED blinks 2 times in every 1.5 seconds and red LED blinks in low battery.
  - Charging Mode: While charging the battery, it blinks in red LED and it changes to green LED after the charging completed.
  - Error Status: it blinks in red LED.
- 2) Battery Status: if the battery is low, the operation LED blinks in red while operation. (it might record less than 10 minutes for the video recording)

## Micro SD Card

- 1) Since this device does not have the internal memory, make sure to check the Micro SD card was loaded.
- 2) When loading the Micro SD card, push the Micro SD card closely to the bottom in its socket of the device.
- 3) When unloading the Micro SD card, push the groove of Micro SD card smoothly out using finger-nail.



## File management and delete

### Saving the recorded files

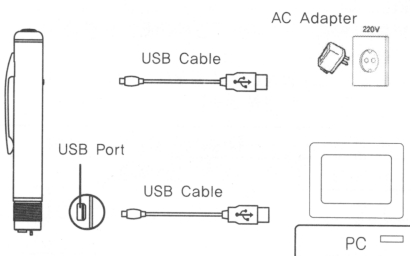
- 1) Video files are to be saved successively from V\_0001 to V\_9999 as MP4 file extension into VIDEO folder.
- 2) Quick Photo files are to be saved successively from C\_0001 to C\_9999 as JPG file extension into CAPTURE folder.
- 3) Voice files are to be saved successively from A\_0001 to A\_9999 as MP3 file extension into VOICE folder.

### File management and delete

- 1) Insert the Micro SD Card into the device first, then connect the device into the USB port of the PC using provided USB Cable.
- 2) You can check, manage, or delete files, which are saved into the Removable Disk using Windows Explorer.

## Charging battery

- 1) Connect the USB cable directly to the PC or provided AC Adapter so as to start charging like the following picture
- 2) While charging the battery, it blinks in red LED and it changes to green LED after the charging completed.
- 3) Generally it might take 2~3 hours to complete the charging.
- 4) Even in the battery charging, you can record Video and Voice using "Operation Button".



### Reset

If the device happen to occur the malfunction, push reset S/W so as to work properly using the edge of sharpen pencil.



## Longtime Recording

CAM-2 supports longtime recording for video (up to 4 hours video recording based on 4GB of Micro SD card) or voice using external battery pack, power from USB port of the PC, or connected USB cable to AC adapter.

- 1) Connect the USB cable to the USB port of the PC or provided AC adapter. (refer to the Charging battery)
- 2) While charging, press "Operation Button" slightly and it releases the USB connection to start recording the video or voice depends on the status of the Mode Switch. (it charges continuously while recording video or voice if the USB cable is connected to PC or AC adapter)
- 3) Since it uses the external power, no matter what memory capacity it records till memory of the Micro SD card would be not enough space to record.

## Time setup

- 1) Insert the Micro SD Card into the device first, then connect the device the PC using provided USB Cable.
- 2) Create the time setup file (date\_time.cfg), which must be saved on the root folder of Removable disk using "memo pad" application.
  - ① Notepad running.
  - ② Date, time, "year month day hours minutes seconds" in order to enter.
  - ③ file by clicking the "Save As" to choose.
  - ④ Location to store the "Removable Disk" is selected.
  - ⑤ Date\_time.cfg to enter the file name.
  - ⑥ Click Save and close the window if you are finished.

